

Stapler (SR100)

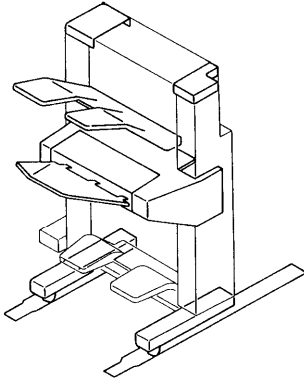
1. Stapler I	4
2. Stapler II	6
3. Stapler III	8
4. Stapler IV	10
5. Stapler V	12
6. Stapler VI	14
7. Stapler VII	16
8. Finisher Control Board	18
9. Harness Layout Front View	20
10. Exit Sensor Harness	22
11. Stapler Motor Harness	24
12. Stapler Interface Harness	26
13. Stapler Tray Unit Harness	28
14. Power Relay Harness	30
15. Circuit Breaker Harness	32
16. Noise Fitter Harness	34
17. TerminalHarness-220/240V	36
18. Decal	38

PARTS INDEX

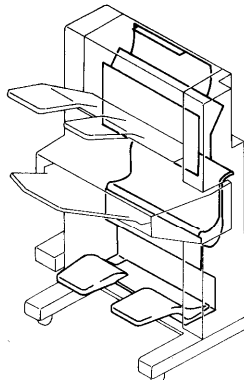
LOCATION OF UNIT

March 31, '88

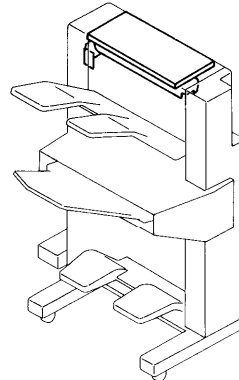
1. STAPLER I



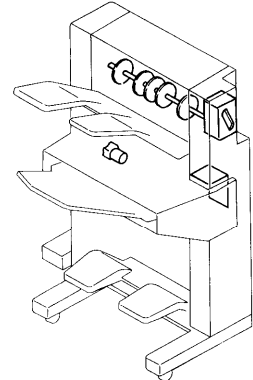
2. STAPLER II



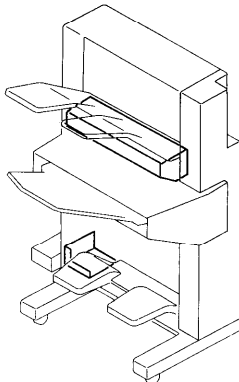
3. STAPLER III



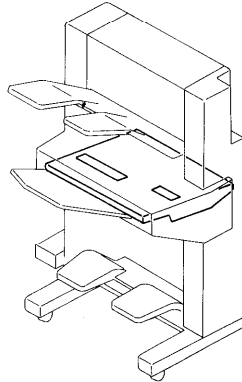
4. STAPLER IV



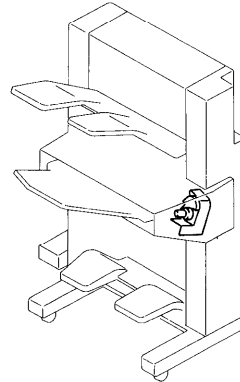
5. STAPLER V



6. STAPLER VI

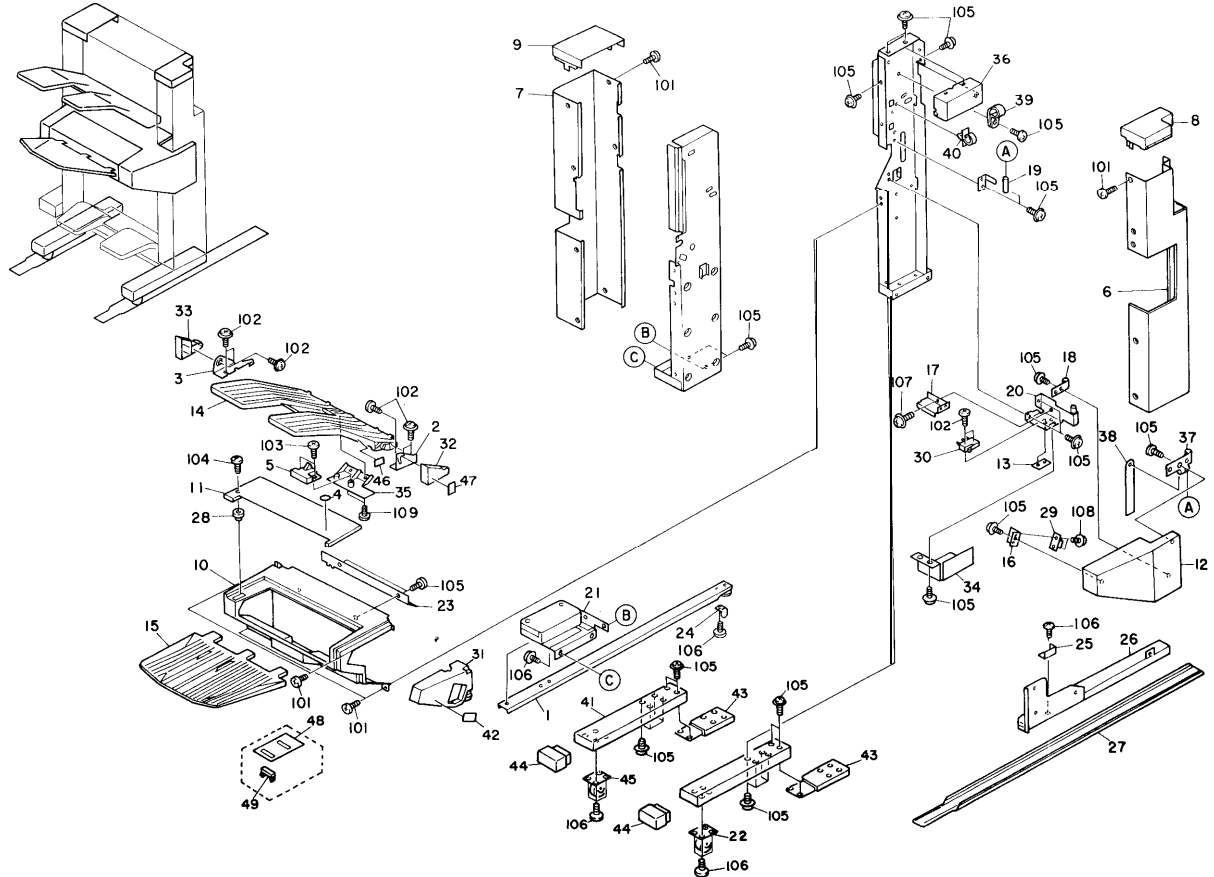


7. STAPLER VII



1. STAPLER 1

March 31, '88



1. STAPLER I

March 31, '88

Index No.	Part No.	Description	Q'ty Per Assembly
*	VFS0 8206	Decal Sheet - French	1
*	VFS0 8207	Decal Sheet - German	1
*	VFS0 8208	Decal Sheet - Spanish	1
*	VFS0 8209	Decal Sheet - Italian	1
*	VFS0 8032	Instruction Card - English - LT/LDG	1
*	VFS0 8033	Instruction Card - French - LT/LDG	1
*	VFS0 8034	Instruction Card - French - A3/A4	1
*	VFS0 8035	Instruction Card - German	1
*	VFS0 8036	Instruction Card - Spanish	1
*	VFS0 8037	Instruction Card - Italian	1
*	VFS0 8038	Instruction Card - English - A3/A4	1
*	A938 5113	IC - HN27512G-25 (Copier ROM)	1
*	A937 8610	Installation Procedure - English	1
*	A937 8615	Installation Procedure - 5 Language	1
*	A938 8600	Operating Instructions - English, NA	1
*	A938 8606	Operating Instructions - English, EU	1
*	A938 8601	Operating Instructions - German	1
*	A938 8602	Operating Instructions - French	1
*	A938 8603	Operating Instructions - Italian	1
*	A938 8604	Operating Instructions - Spanish	1
1	VFF1 6549	Slider	1
2	VFA3 7569	Front Holder - Stacker Tray	1
3	VFA3 7570	Rear Holder - Stacker Tray	1
4	VFS0 8083	Decal - G1	1
5	VRG1 0699	Photo Interrupter	1
6	VFE6 0155	Front Cover	1
7	VFE6 0156	Rear Cover	1
8	VFE6 0157	Front Upper Cover	1
9	VFE6 0193	Rear Upper Cover	1
10	VFL6 0040	Stapler Tray Cover	1
11	VFE6 0195	Upper Cover - Stapler Tray	1
12	VFE6 0196	Stapler Cover	1
13	VFA3 3516	Nut Plate	1
14	VFE6 0198	Stacker Tray	1

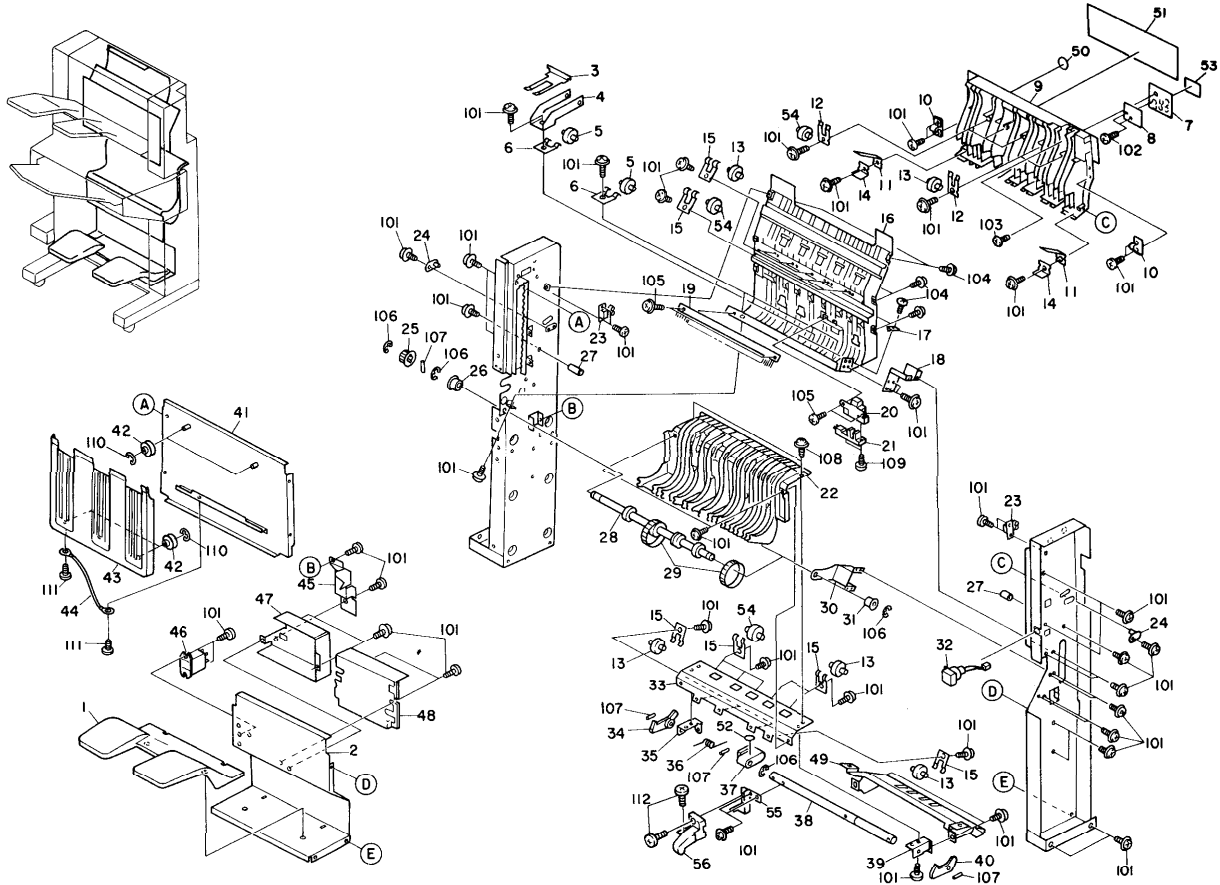
Index No.	Part No.	Description	Q'ty Per Assembly
15	VFE6 0199	Stapler Tray	1
16	VFA3 7510	Magnet Catch Plate	1
17	VFA3 7511	Micro Switch Bracket	1
18	VFA3 7512	Lower Hinge Plate	2
19	VFA5 0082	Upper Hinge	1
20	VFA5 0083	Lower Hinge	1
21	VFE6 0177	Rail Fixing Bracket	1
22	VFL6 0041	Right Caster	2
23	VFA3 7564	Jogger Meter Cover	1
24	VFA3 3793	Slider Stopper	1
25	VFA3 3718	Slider Guide Stopper	1
26	VFL6 0038	Slider Guide	1
27	VFA3 3767	Rail	2
2a	VX62 1952	Magnet	1
29	VX71 3172	Magnet Catch	1
30	VWC4 0155	Micro Switch	1
31	VFE6 0203	Stapler Inner Cover	1
32	VFE6 0209	Front Holder Cover - Stacker Tray	1
33	VFE6 0210	Rear Holder Cover - Stacker Tray	1
34	VFA3 7588	Harness Cover	1
35	VFE6 0211	Stacker Tray Sensor Bracket	1
36	VFE6 0188	Support Plate - Front Cover	1
37	VFA5 0084	Upper Hinge Plate	1
38	VFA3 7587	Jam Removal Bar	1
39	VX62 6856	Harness Clamp	1
40	VWT2 0202	Harness Clamp	1
41	VFE6 0233	Support Stand	2
42	VFS0 8205	Decal - Replacing Staples	1
43	VFE6 0151	Stapler Unit Stand	2
44	VFE6 0230	Stand Cap	2
45	VFL6 0042	Left Caster	2
46	VFS0 8066	Decal - Stacker Tray	1
47	VFS0 8246	Decal - Front Holder Cover	1
48	VFS0 8232	Key Sheet - LT/LDG	1
48	VFS0 8233	Key Sheet - A3/A4	1

Index No.	Part No.	Description	
49	A008 5653	Key Top	
101	0344 0060D	Philips Truss Head Screw - M4x6	
102	0354 0060W	Philips Pan Head Bind Screw - M4x6	
103	0960 3004W	Screw With Flat Washer - M3x4	
104	0313 0080W	Philips Pan Head Screw - M3x8	
105	0960 4006W	Philips Flange Screw - M4x6	
106	0960 4005W	Philips Flange Screw - M4x5	
107	0951 4004W	Philips Screw With Flat Washer - M4x4	
108	0960 3006W	Philips Flange Screw - M3x6	
109	0434 0082W	Tapping Screw - M4x8	

Index No.	Part No.	Description	Qty Per Assembly

2. STAPLER II

March 31, '88



2. STAPLER II

March 31, '88

Index No.	Part No.	Description	Q'ty Per Assembly
1	VFE6 0192	Fall Tray	1
2	VFL6 0031	Fall Tray Bracket	1
3	VFA3 7585	Leaf Spring	2
4	VFA3 7586	Leaf Spring Bracket	2
5	VFA3 7461	Roller	2
6	VFA3 7460	Leaf Spring	2
7	VFE6 0208	Jam Indicator Cover	1
8	VFG1 5486	Jam Indicator	1
9	VFE6 0162	Right Cover	1
10	VFA3 0890	Latch - Insert	2
11	VFA3 7430	Leaf Spring - Right Cover	2
12	VFA3 7593	Leaf Spring	4
13	VFE6 0158	Roller	13
14	VFA3 7561	Right Cover Plate	2
15	VFA3 7418	Leaf Spring	19
16	VFA3 7416	Middle Guide	1
17	VFG1 5474	Photo Transistor	1
18	VFA3 7417	Middle Guide Plate	1
19	VFA1 4842	Anti Static Brush	1
20	VRG1 0424	Sensor Assy	2
21	VFH7 7023	Photo Interrupter	2
22	VFE6 0197	Entrance Guide	1
23	VXZ9 0029	Latch Receiver	2
24	VFA3 7429	Cover Stud Plate	2
25	VFS1 3159	Pulley - 12T	3
26	VFS1 1213	Bushing - 6mm	6
27	VFA3 7556	Pin	2
28	VFA3 7427	Exit Roller - Stapler Tray	1
29	VFA3 7459	Exit Roller Belt - Stapler. Tray	2
30	VFA3 7457	Entrance Guide Plate	1
31	VFS1 1187	Bushing	7
32	VFF1 5668	Push Switch	1
33	VFA3 7456	Upper Entrance Guide Cover	1
34	VFA3 7555	Rear Locking Arm	1
35	VFE6 0173	Rear Locking Arm Bracket	1

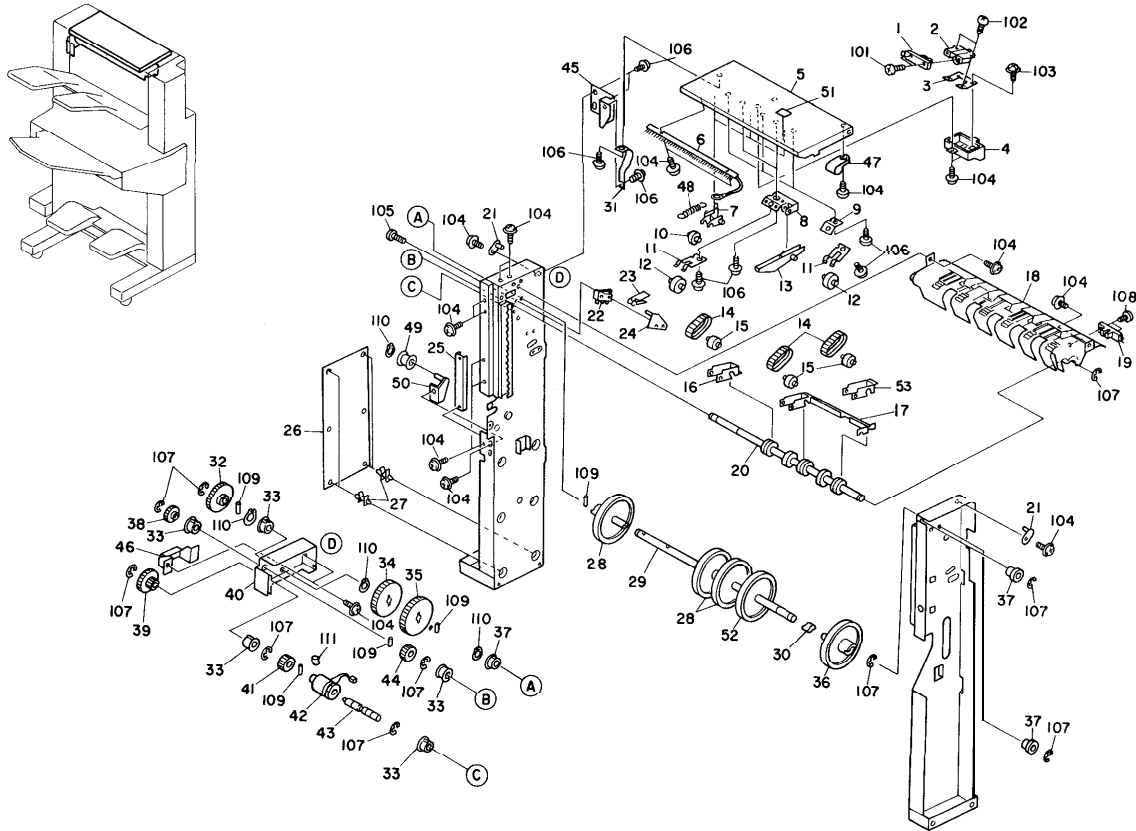
Index No.	Part No.	Description	Q'ty Per Assembly
36	VFA3 7557	Torsion Spring	1
37	VFE6 0202	Entrance Guide Lever	1
38	VFE6 0181	Entrance Guide Lever Shaft	1
39	VFE6 0172	Front Locking Arm Bracket	1
40	VFA3 7554	Front Locking Arm	1
41	VFL6 0032	Stacker Tray Guide Bracket	1
42	VFS1 6160	Stacker Guide Roller	4
43	VFL6 0034	Stacker Tray Guide	1
44	VFF1 6594	Grounding Wire	1
45	VFE6 0183	Rear Harness Cover	1
46	VFK6 7601	Relay - 115V	1
46	VFK6 7602	Relay - 220V/240V	1
47	VFE6 0176	Power Supply Unit Cover	1
48	VFH3 2042	Power Supply Unit - 115V	1
48	VFK6 3201	Power Supply Unit - 220V	1
49	VFE6 0175	Lower Entrance Guide Cover	1
50	VFS0 8082	Decal - F2	1
51	VFS0 8204	Decal-Removing Misfeed Paper - English	1
52	VFS0 8084	Decal - G2	1
53	VFS0 8052	Jam Indicator Plate	1
54	VFA3 7419	Relay Roller	13
55	VFE6 0180	Front Guide Lever	1
56	VFE6 0182	Front Guide Lever Bracket	1

Index No.	Part No.	Description	Q'ty Per Assembly
101	0960 4006W	Phillips Flange Screw - M4x6	
102	0413 0082W	Tapping Screw - M3x8	
103	0434 0082W	Tapping Screw - M4x8	
104	0313 0040w	Phillips Pan Head Screw - M3x4	
105	0960 3004W	Screw With Flat Washer - M3x4	
106	0720 0050E	Retaining Ring - M5	
107	0632 0140G	Parallel Pin	
108	0951 4004W	Phillips Screw With Flat Washer - M4x4	
109	0313 0080W	Phillips Pan Head Screw - M3x8	
110	0720 0030E	Retaining Ring - M3	
111	0314 0050W	Phillips Pan Head Screw - M4x5	

Index No.	Part No.	Description	Q'ty Per Assembly

3. STAPLER III

March 31, '88



3. STAPLER III

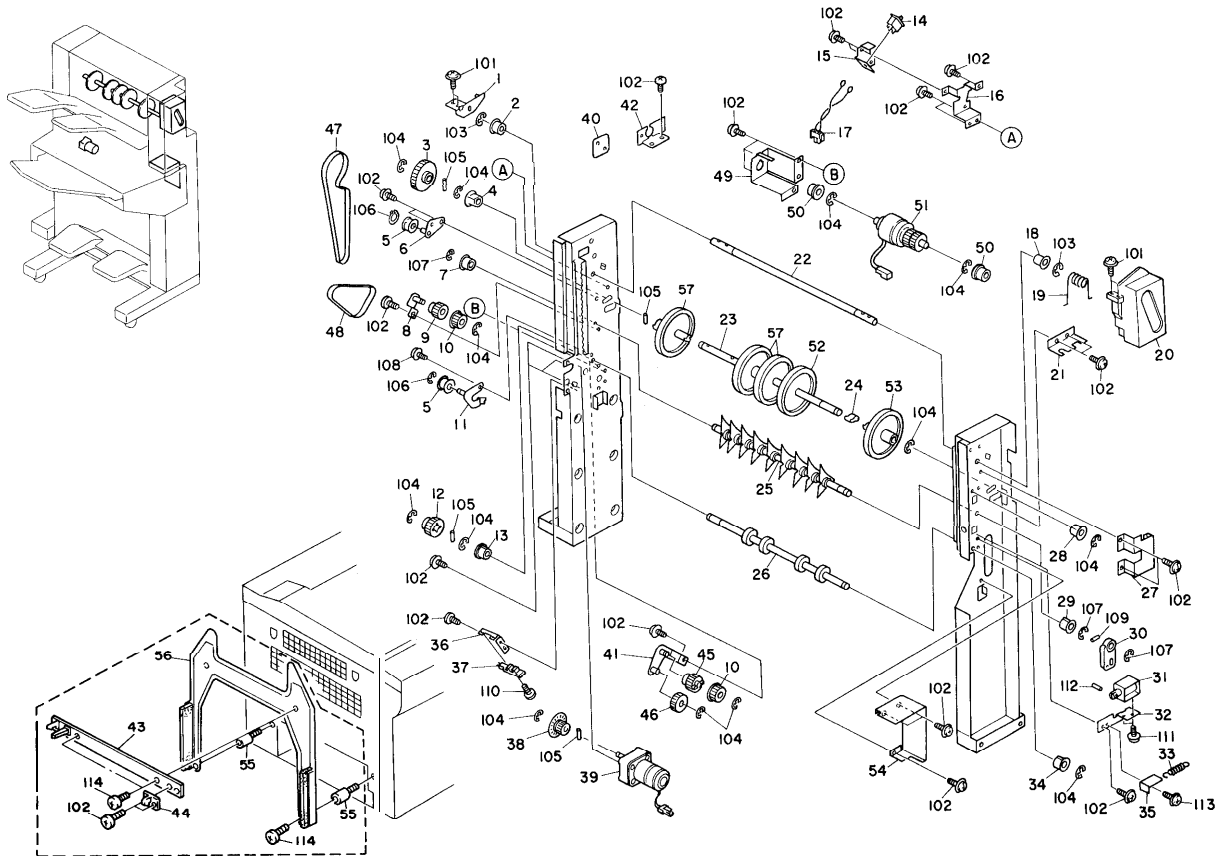
March 31, '88

Index No.	Part No.	Description	Q'ty Per Assembly
1	VFH7 7023	Photo Interrupter	2
2	VRG1 0424	Sensor Assy	2
3	VFA3 7559	Sensor Plate	1
4	VFE6 0207	Sensor Cover	1
5	VFL6 0033	Upper Cover	1
6	VFF1 6581	Anti-Static Brush	1
7	VFA3 7454	Roller Holder	3
8	VFA3 7572	Paper Flattener Bracket	2
9	VFA3 7435	Leaf Spring Holder	3
10	VFA3 7563	Press Roller	3
11	VFA3 7418	Leaf Spring	19
12	VFE6 0158	Roller	26
13	VFA3 4571	Paper Flattener	2
14	VFA3 7453	Exit Roller Belt - Stacker Tray	2
15	VFA3 7450	Exit Pulley Roller	3
16	VFE6 0166	Roller Holder	2
17	VFE6 0165	Sensor Feeler	1
18	VFE6 0163	Exit Guide	1
19	VFH7 7038	Photo Sensor	2
20	VFE6 0161	Exit Roller - Stacker Tray	1
21	VFA3 7429	Cover Stud Plate	2
22	VWC4 0155	Micro Switch	1
23	VFA3 7439	Leaf Spring - Micro Switch	1
24	VFF1 6539	Micro Switch Bracket	1
25	VFA3 7566	Rear Support Bracket	1
26	VFM6 0037	Finisher Control Board	1
27	VVT2 0001	Nylon Stud	4
28	VFA3 7422	Rear Transport Roller	3
29	VFA3 7421	Transport Roller Shaft	1
30	VFA3 7423	Spacer	2
31	VFA3 7575	Upper Cover Belt	1
32	VFS2 0379	Gsar - 60T	2
33	VFS1 1213	Bushing - 6mm	6
34	VFS2 0389	Gear - 40T	1

Index No.	Part No.	Description	Q'ty Per Assembly
36	VFE6 0159	Front Transport Roller	1
37	VFS1 1187	Bushing	7
38	VFS2 0381	Gear - 25T	1
39	VFS2 0380	Coupled Gear - 45T/25T	1
40	VFA3 7532	Clutch Bracket	1
41	VFS2 0383	Gear - 25T	1
42	VFF1 6589	Speed-up Clutch	1
43	VFA3 7531	Speed-up Clutch Shaft	1
44	VFS2 0382	Gear - 20T	1
45	VFA3 7604	Belt Stopper	1
46	VFA3 7598	Clutch Support Bracket	1
47	VX62 6856	Harness Clamp	1
48	VFS2 2266	Exit Spring	1
49	VFA3 7529	Idle Pulley	1
50	VFL6 0036	Pulley Stud	1
51	VFS0 8081	Decal - F1	1
52	VFE6 0160	Middle Transport Roller	1
53	VFA3 7448	Front Roller Holder	1
101	0313 0080W	Philips Pan Head Screw - M3x8	
102	0960 3004W	Screw With Flat Washer - M3x4	
103	0413 0062W	Tapping Screw - M3x6	
104	0960 4006W	Philips Flange Screw - M4x6	
105	0960 4010W	Philips Flange Screw - M4x10	
106	0951 4004W	Philips Screw With Flat Washer - M4x4	
107	0720 0050E	Retaining Ring - M5	
108	0313 0080W	Philips Pan Head Screw - M3x8	
109	0632 0140G	Parallel Pin	
110	0727 0050E	Retaining Ring - M5	

4. STAPLER IV

March 31, '88



4. STAPLER IV

March 31, '88

Index No.	Part No.	Description	Q'ty Per Assembly
1	VFF1 6555	Release Lever Arm	1
2	VFA1 0056	Nylon Bushing	1
3	VFS2 0379	Gear - 60T	2
4	VFS1 1432	Nylon Bushing	1
5	VFA3 7529	Idle Pulley	2
6	VFF1 6552	Tension Pulley Stud	1
7	VFS1 1376	Bushing	4
a	VFF1 6548	Pulley Holder	2
9	VFS2 0378	Gear - 15T	1
10	VFS1 3159	Pulley - 12T	3
11	VFL6 0035	Pulley Stud	1
12	VFS0 0015	Gear - 20T	1
13	VFS1 1190	Bushing	1
14	VWC2 0073	Micro Switch	1
15	VFA3 7539	Switch Bracket	1
16	VFA3 7537	Switch Support Bracket	1
17	VFF1 6590	Docking Switch Harness	1
18	VFS1 1119	Bushing	1
19	VFA3 7536	Torsion Spring - Release Handle	1
20	VFE6 0189	Release Handle	1
21	VFA3 7548	Release Lever Plate	1
22	VFA3 7533	Release Handle Shaft	1
23	VFA3 7420	Entrance Roller Shaft	1
24	VFA3 7423	Spacer	2
25	VFA3 7463	Stapler Gate	1
26	VFA3 7426	Entrance Roller - Stapler Tray	1
27	VFE6 0200	Release Lever Guide	1
28	VFS1 1431	Nylon Bushing	1
29	VFS1 1433	Bushing - 4mm	2
30	VFA3 7464	Solenoid Lever - Stapler Gate	1
31	VFH7 5062	Stapler Gate Solenoid	2
32	VFA3 7465	Solenoid Bracket	1
33	VFS2 2252	Solenoid Spring	2
34	VFS1 1187	Bushing	7
35	VFA3 7466	Solenoid Plate	1

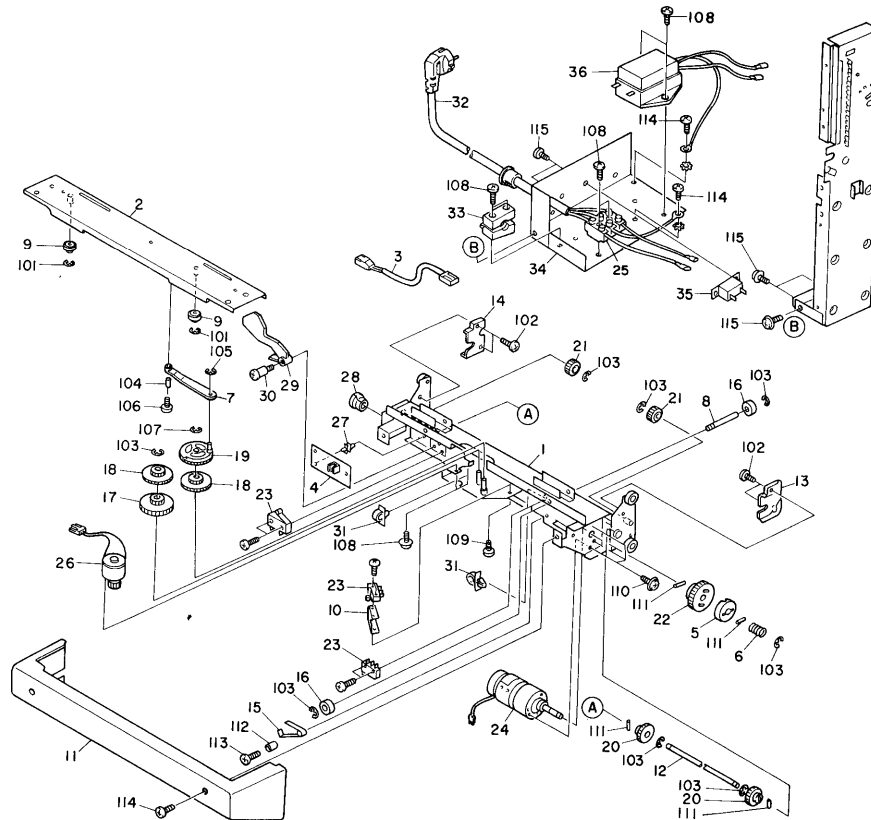
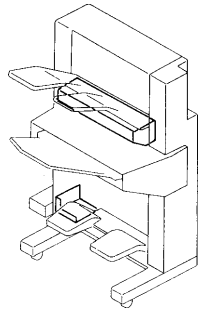
Index No.	Part No.	Description	Q'ty Per Assembly
36	VFA3 7528	Pulse Generator Bracket	1
37	VFH7 7038	Photo Sensor	2
38	VFA3 7527	Pulse Generator Disk	1
39	VFH7 1329	Main Drive Motor - DC24V 85W	1
40	VFA3 7544	Shield Plate	1
41	VFL6 0037	Gear Stud	1
42	VFE6 0219	Power Cord Bracket	1
43	VFE6 0184	Joint Holder - Folder	1
44	VFE6 0201	Joint Hooker	1
45	VFS0 0015	Gear - 20T	1
46	VFS0 0014	Gear - 27T	1
47	VFE6 0191	Timing Belt - 300XL	1
48	VFE6 0190	Timing Belt - 160XL	1
49	VFE6 0171	Clutch Bracket	1
50	VFS1 1189	Bushing	2
51	VFK6 7501	Transport Drive Clutch	1
52	VFE6 0160	Middle Transport Roller	1
53	VFE6 0159	Front Transport Roller	1
54	VFA3 7565	Stapler Cover Guide	1
55	VFE6 0228	Stud	1
56	VFL6 0039	Joint Holder Bracket	1
57	VFA3 7422	Rear Transport Roller	3

Index No.	Part No.	Description	Q'ty Per Assembly
101	0960 4008W	Philips Flange Screw-M4x8	
102	0960 4006W	Philips Flange Screw - M4x6	
103	0720 0060E	Retaining Ring - M6	
104	0720 0050E	Retaining Ring - M5	
105	0632 0140G	Parallel Pin	
106	0727 0040E	Retaining Ring - M4	
107	0720 0030E	Retaining Ring - M3	
108	0951 4004W	Philips Screw With Flat Washer - M4x4	
109	0632 0080G	Parallel Key - 2x8mm	
110	0313 0080W	Philips Pan Head screw - M3x8	
111	0960 3004W	Screw With Flat Washer - M3x4	
112	0633 0160E	Pin - 3x16mm	
113	0314 0060W	Philips Pan Head Screw - M4x6	
114	0802 5094	Tapping Truss Head Screw - M4x8	

Index No.	Part No.	Description	Q'ty Per Assembly

5. STAPLER V

March 31, '88



5. STAPLER V

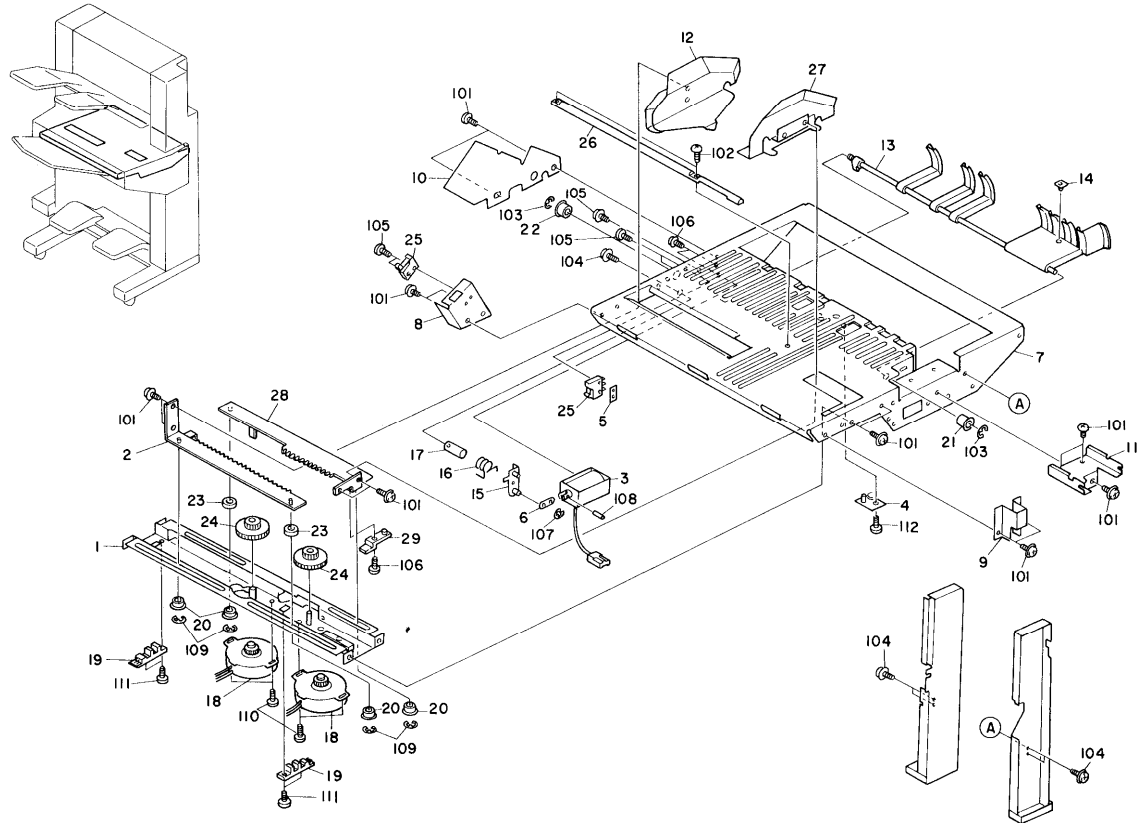
March 31, '88

Index No.	Part No.	Description	Q'ty Per Assembly
1	VFF1 6543	Tray Stay Bracket	1
2	VFF1 6544	Stacker Tray Stay	1
3	VFF1 7867	Relay Harness - Stacker Tray	1
4	VFG1 3721	Stacker Control Board	1
5	VFA3 3876	Collar	1
6	VFA3 3908	Spring	1
7	VFA3 3956	Link	1
8	VFA3 3957	Roller Shaft	2
9	VFA3 3959	Shaft Roller	2
10	VFA3 3960	Micro Switch Bracket	1
11	VFE6 0213	Stacker Cover	1
12	VFA3 7472	Stacker Drive Shaft	1
13	VFA3 7473	Front Gear Cover	1
14	VFA3 7474	Rear Gear Cover	1
15	VFA3 7483	Micro Switch Actuator - Lower Limit	1
16	VXG1 6012	Bearing	4
17	VFS2 0097	Coupled Gear - 19T/62T	1
18	VFS2 0098	Coupled Gear - 19T/56T	2
19	VFS2 0099	Gear - 56T	1
20	VFS2 0372	Gear - 22T	2
21	VFS2 0373	Gear - 16T	2
22	VFS2 0374	Gear - 32T	1
23	VWC4 0084	Micro Switch	3
24	VFH7 1331	Stacker Tray Motor - DC24V 2W	1
25	VWT1 0159	Terminal - 3P - 220V/240V	1
26	VFF1 6592	Shift Motor - Stacker Tray - DC9v 0.5w	1
27	VVT2 0001	Nylon Stud	3
28	VX62 6990	Nylon Bushing	1
29	VFA3 7596	Micro Switch Actuator - Tray Down	1
30	VFS1 9121	Shoulder Screw	1
31	VWT2 0202	Harness Clamp	2
32	VFH2 5085	Power Supply Cord - 115V	1
32	VFH2 5080	Power Supply Cord - 220V	1
32	VFH2 5081	Power Supply Cord - 240V	1
33			1

Index No.	Part No.	Description	Q'ty Per Assembly
34	VFE6 0223	Power Cord Bracket - 115V	1
34	VFE6 0224	Power Cord Bracket - 220/240V	1
35	VWD3 0039	Circuit Breaker - 115V	1
35	VWD3 0088	Circuit Breaker - 220V/240V	1
36	VWK3 0081	Noise Filter - 115V	1
36	VWK3 0129	Noise Filter - 220V/240V	1
101	0720 0040E	Retaining Ring - M4	
102	0313 0040W	Philips Pan Head Screw - M3x4	
103	0720 0050E	Retaining Ring - M5	
104	0707 4060B	Spacer	
105	0727 0040E	Retaining Ring - M4	
106	0323 0080W	Philips Sunken Head Screw - M3x8	
107	0720 0030E	Retaining Ring - M3	
108	0353 0060W	Philips Pan Head Bind Screw - M3x6	
109	0313 0050W	Philips Pan Head Screw - M3x5	
110	0354 0060W	Philips Pan Head Bind Screw - M4x6	
111	0632 0140G	Parallel Pin	
112	0707 3070B	Spacer	
113	0313 0080W	Philips Pan Head Screw - M3x8	
114	0354 0060F	Philips Pan Head Screw - M4x6	
115	0960 4006W	Philips Flange Screw - M4x6	

6. STAPLER VI

March 31, '88



March 31, '88

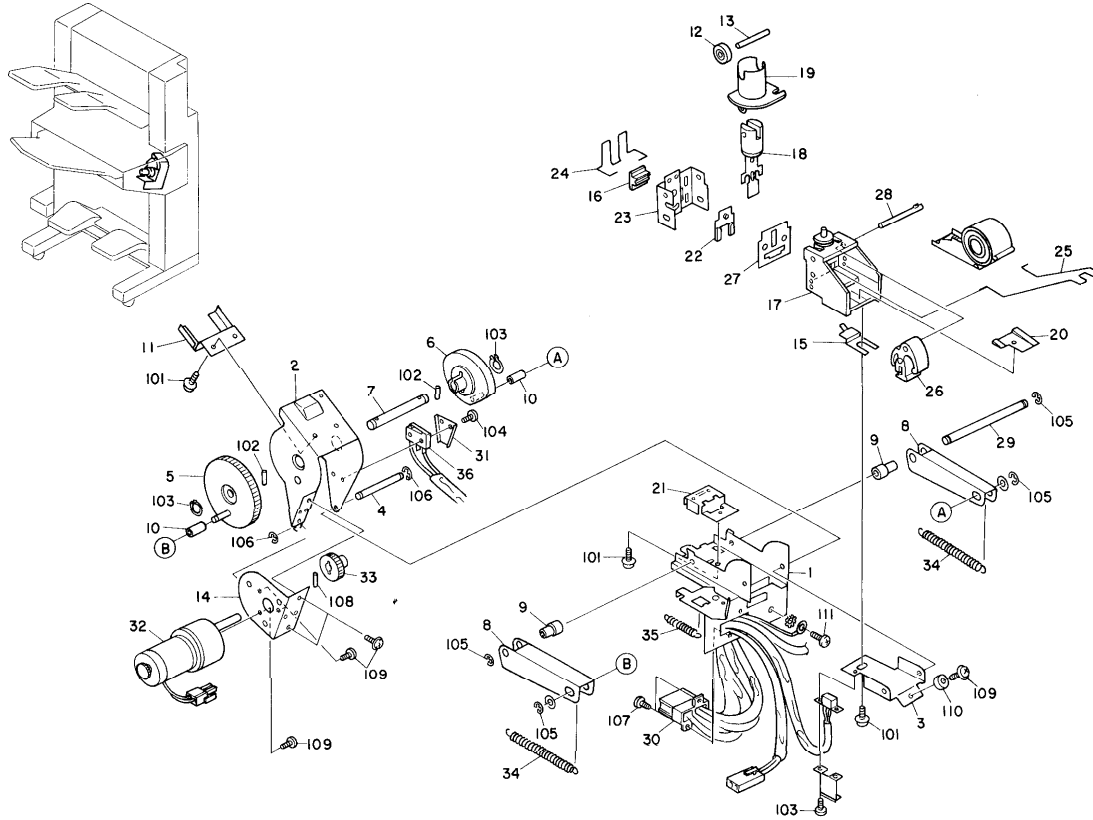
6. STAPLER VI

1 index No.	Part No.	Description	Q'ty Per Assembly
1	VFL6 0043	Staple Unit Stay	1
2	VFL6 0045	Rack - Rear Jogger Fence	1
3	VFF1 5666	Stopper Solenoid - DC24V	1
4	VFG1 5473	LED Sensor	1
5	VFA3 3516	Nut Plate	1
6	VFA3 4707	Solenoid Lever	1
7	VFE6 0214	Staple Unit Base	1
8	VFA3 7479	Staple Cover Switch Bracket	1
9	VFA3 7480	Magnet Catch Plate	1
10	VFA3 7481	Staple Unit Base Bracket	1
11	VFA3 7482	Stopper Rail	1
12	VFA3 7485	Rear Jogger Fence	1
13	VFA3 7487	Stapler Tray Stopper	1
14	VFA3 7488	Rubber Seal	1
15	VFA3 7489	Solenoid Arm	1
16	VFA3 7490	Solenoid Spring	1
17	VFA3 7591	Stud	1
18	VFH7 1283	Jogger Motor - DC24V 1.2W	2
19	VFH7 7038	Photo Sensor	1
20	VFS1 1006	Nylon Bushing	2
21	VFS1 1187	Bushing	1
22	VFS1 1213	Bushing - 6mm	1
23	VFS1 6161	Nylon Bushing	2
24	VFS2 0375	Coupled Gear 44T/14T	2
25	VWC4 0155	Micro Switch	2
26	VFA3 7574	Jogger Guide Rail	1
27	VFL6 0046	Front Jogger Fence	1
28	VFL6 0044	Rack - Front Jogger Fence	1
29	VFE6 0179	Slider Plate	1

index No.	Part No.	Description	Q'ty Per Assembly
101	0354 0060W	Philips Truss Head Screw - M4x6	
102	0353 0060F	Philips Truss Head Screw - M3x6	
103	0720 0050E	Retaining Ring - M5	
104	0960 4006W	Philips Flange Screw - M4x6	
105	0413 0082W	Tapping Screw - M3x8	
106	0313 0060W	Philips Pan Head Screw - M3x6	
107	0720 0030E	Retaining Ring - M3	
108	0632 0080G	Parallel Key - 2x8mm	
109	0720 0030E	Retaining Ring - M3	
110	0960 4005W	Philips Flange Screw - M4x5	
111	0313 0080W	Philips Pan Head Screw - M3x8	
112	0951 4004W	Philips Screw With Flat Washer - M4x4	

7. STAPLER VII

March 31, '88



7. STAPLER VII

March 31, '88

Index No.	Part No.	Description	Q'ty Per Assembly
1	VFF1 6575	Stacker Holder	1
2	VFA3 7492	Upper Frame	1
3	VFA3 7493	Lower Frame	1
4	VFA3 7495	Holder Shaft	1
5	VFA3 7497	Gear - 54T	1
6	VFA3 7498	Stapler Cam	1
7	VFA3 7499	Stapler Cam Shaft	1
8	VFA3 7500	Crank Arm	2
9	VFA3 7501	Upper Spacer	2
10	VFA3 7502	Lower Spacer	2
11	VFA3 7503	Leaf Spring	1
12	VFA3 7504	Roller	1
13	VFA3 7505	Roller Shaft	1
14	VFA3 7506	Stapler Motor Bracket	1
15	VFA3 7507	Leaf Spring	1
16	VFA3 7508	Block	1
17	VFA3 7515	Plunger Bracket	1
18	VFA3 7516	Plunger	1
19	VFA3 7517	Coil Ass'y	1
20	VFA3 7518	Nut Plate	1
21	VFA3 7519	Stopper Holder Plate	1
22	VFA3 7520	Former	1
23	VFA3 7521	Rear Plate	1
24	VFA3 7522	Leaf Spring	1
25	VFA3 7523	Spring	1
26	VFA3 7524	Feeder	1
27	VFA3 7525	Front Plate	1
28	VFA3 7526	Plunger Bracket Pin	1
29	VFA3 7547	Crank Arm Shaft	1
30	VFM6 0043	Staple Motor Harness	1
31	VFA3 7573	Home Position Switch Cover	1
32	VFH7 1330	Staple Motor - DC24V 4W	1
33	VFS2 0376	Gear - 18T	1
34	VFS2 2255	Tension Spring	2
35	VFS2 2256	Tension Spring	1

Index No.	Part No.	Description	Q'ty Per Assembly
36	VWC4 0084	Micro Switch	1
101	0960 4006W	Philips Flange Screw - M4x6	
102	0632 0160G	Parallel Pin - M2x16	
103	0720 0080E	Retaining Ring - M8	
104	0314 0080W	Philips Pan Head Screw - M4x8	
105	0720 0040E	Retaining Ring - M4	
106	0720 0030E	Retaining Ring - M3	
107	0313 0080W	Philips Pan Head Screw - M3x8	
108	0632 0140G	Parallel Pin	
109	0354 0060W	Philips Truss Head Screw - M4x6	
110	0712 0040W	Nut	
111	0354 0060F	Philips Pan Head Screw M4x6	

8. FINISHER CONTROL BOARD

March 31, '88

IC & TRANSISTOR

SYMBOL NO.	INDEX NO.	SYMBOL NO.	INDEX NO.	SYMBOL NO.	INDEX NO.	SYMBOL NO.	INDEX NO.
Q01	101	Q11	108	Q21	107	Q31	122
Q02	102	Q12	109	Q22	118	Q32	115
Q03	101	Q13	110	Q23	118	Q33	122
Q04	103	Q14	111	Q24	119	Q34	115
Q05	104	Q15	112	Q25	120	Q35	115
Q06	105	Q16	113	Q26	115	Q36	123
Q07	106	Q17	114	Q27	121	Q37	123
Q08	107	Q18	115	Q28	101	Q38	123
Q09	107	Q19	116	Q29	101	Q39	123
Q10	107	Q20	117	Q30	115	Q40	124

CAPACITOR

SYMBOL NO.	INDEX NO.	SYMBOL NO.	INDEX NO.	SYMBOL NO.	INDEX NO.	SYMBOL NO.	INDEX NO.
C01	125	C11	127	C21	126	C32	126
C02	126	C12	127	C22	132	C33	126
C03	127	C13	126	C23	133	C34	126
C04	126	C14	129	C24	133	C35	126
C05	128	C15	130	C25	126	C37	126
C06	126	C16	131	C26	126	C38	126
C07	126	C17	129	C27	128	C39	126
C08	126	C18	126	C29	126	C40	126
C09	129	C19	126	C30	126	C41	126
C10	129	C20	126	C31	126	C42	126

DIODE

SYMBOL NO.	INDEX NO.	SYMBOL NO.	INDEX NO.	SYMBOL NO.	INDEX NO.	SYMBOL NO.	INDEX NO.	SYMBOL NO.	INDEX NO.	SYMBOL NO.	INDEX NO.	SYMBOL NO.	INDEX NO.	SYMBOL NO.	INDEX NO.
C43	134	C54	126	001	136	011	136	024	136	034	136	044	136	058	136
C44	126	C55	126	D02	137	014	136	025	136	035	136	045	136	059	136
C45	126	C56	126	003	138	016	138	026	136	036	136	046	136	060	136
C46	126	C57	126	004	136	017	138	027	138	037	136	051	136	061	136
C47	126	C58	126	005	136	018	138	028	136	038	136	052	136	062	138
C48	126	C59	126	006	136	019	138	029	136	039	138	053	136	063	138
C50	134			007	136	020	139	030	136	040	138	054	136	064	138
C51	126			008	136	021	136	031	136	041	138	055	136	065	138
C52	138			009	136	022	138	032	136	042	138	056	136		
C53	138			010	136	023	138	033	136	043	138	057	136		

RECUIT BREAKER

SYMBOL NO.	INDEX NO.
C801	140
C802	141

RADIATION PLATE

SYMBOL NO.	INDEX NO.
HS01	142

ZENER DIODE

SYMBOL NO.	INDEX NO.	SYMBOL NO.	INDEX NO.
Z001	143	Z006	146
Z002	144	Z007	146
Z003	145	Z008	146
Z004	144	Z009	144
Z005	146	Z010	144

COIL

SYMBOL NO.	INDEX NO.	SYMBOL NO.	INDEX NO.
Z011	144	L01	147
L02	148	L03	147
L04	147		

RESONATOR

SYMBOL NO.	INDEX NO.	SYMBOL NO.	INDEX NO.
X01	149		

CONTACTOR

SYMBOL NO.	INDEX NO.	SYMBOL NO.	INDEX NO.
CP01	150	CP07	150
CP03	150	CP08	150
CP04	150		
CP05	150		
CP06	150		

DIP SWITCH

SYMBOL NO.	INDEX NO.	SYMBOL NO.	INDEX NO.
SW01	166		

CONNECTOR

SYMBOL NO.	INDEX NO.	SYMBOL NO.	INDEX NO.
J01	161	J16	152
J02	162	J17	154
J03	163	J18	165
J04	154		
J05	155		
J06	156		
J07	157		
J08	158		
J09	159		
J10	160		

RESISTOR ARRAY

SYMBOL NO.	INDEX NO.	SYMBOL NO.	INDEX NO.
RA01	167	RA07	171
RA02	167	RA08	168
RA03	168		
RA04	169		
RA06	170		

VARIABLE RESISTOR

SYMBOL NO.	INDEX NO.	SYMBOL NO.	INDEX NO.
VR01	172		
VR02	173		
VR03	174		

RESISTOR

SYMBOL NO.	INDEX NO.	SYMBOL NO.	INDEX NO.	SYMBOL NO.	INDEX NO.	SYMBOL NO.	INDEX NO.	SYMBOL NO.	INDEX NO.	SYMBOL NO.	INDEX NO.	SYMBOL NO.	INDEX NO.	SYMBOL NO.	INDEX NO.
R01	175	R11	183	R23	184	R35	187	R46	175	R59	184	R72	187		
R02	176	R12	184	R25	186	R36	188	R47	175	R61	184	R73	191		
R03	175	R13	184	R26	186	R37	179	R48	187	R62	184	R74	177		
R04	177	R14	184	R27	186	R38	187	R49	187	R65	178	R75	183		
R05	178	R15	184	R28	186	R39	188	R50	175	R66	192	R76	187		
R06	175	R17	185	R29	184	R40	189	R51	192	R67	184	R77	182		
R07	179	R18	185	R30	184	R41	189	R52	190	R68	184	R78	184		
R08	180	R19	185	R32	178	R42	189	R55	184	R69	191	R79	184		
R09	181	R20	185	R33	178	R43	192	R56	184	R70	177	R80	184		
R10	182	R22	184	R34	179	R44	182	R58	184	R71	183	R81	184		

SYMBOL NO.	INDEX NO.	SYMBOL NO.	INDEX NO.	SYMBOL NO.	INDEX NO.	SYMBOL NO.	INDEX NO.
R82	192	R97	184	R13	187	R23	187
R83	178	R98	184	R14	187	R24	187
R84	184	R99	178	R15	187	R25	187
R86	184	R00	178	R16	187	R26	187
R88	184	R01	178	R17	176	R27	187
R90	184	R02	178	R18	176	R28	175
R92	179	R05	182	R19	176	R29	182
R93	182	R06	183	R20	176	R30	190
R94	184	R11	187	R21	176		
R95	184	R12	187	R22	176		

8. FINISHER CONTROL BOARD

March 31, '88

Index No.	Part No.	Description	Q'ty Per Assembly
*	VFM6 0037	Finisher Control Board	1
101	VWA2 0773	Transistor - RN1203	
102	1403 0337	Photo Coupler - PC847	
103	VWA2 0331	Transistor - 2SB874R	
104	VWA2 0572	Transistor - 2SD863E	
105	VWA2 0590	Transistor - 2SC536G	
106	VWA2 0135	IC Regulator - HA17805P	
107	1407 0510	IC - HD7407P	
108	1407 1334	IC - UPD7810G	
109	1407 1026	IC - SN74LS373N	
110	5353 5132	IC - HN4827128G	
111	1407 1794	IC - I/O, UPD8255AC-5	
112	1407 0414	IC - SN7438N	
113	1407 1023	IC - HD74LS14	
114	1408 0408	IC - PS518A	
115	VWA2 0354	Transistor - 2SB795	
116	1403 0512	Photo Coupler - PC827	
117	1403 0503	Photo Coupler - PC817	
118	VFK6 5001	IC - TD62803P	
119	1407 0520	IC - 74LS00	
120	1407 1130	IC - 74LS240	
121	VWA2 0984	Transistor - 2SB1099	
122	VWA2 0355	Transistor - 2SD986	

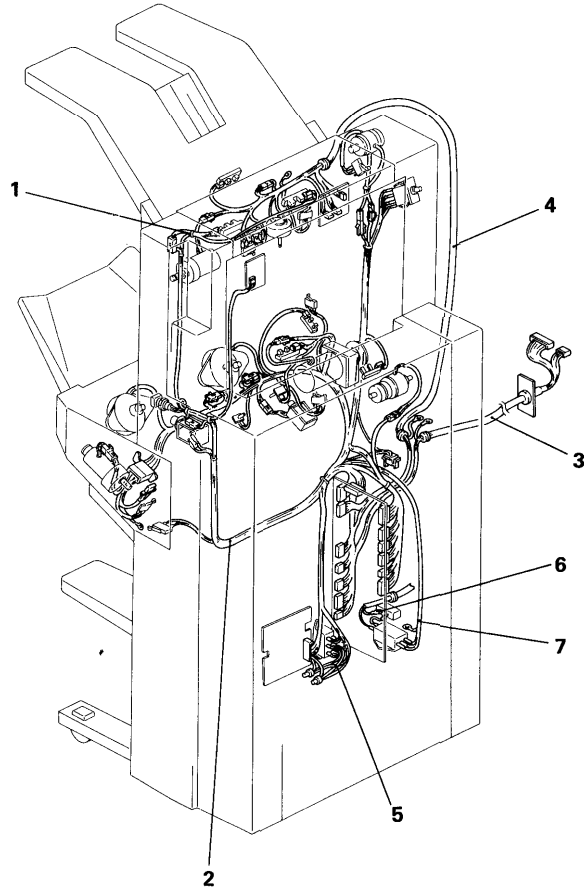
Index No.	Part No.	Description	Q'ty Per Assembly
123	1400 0206	Transistor - 2SA950Y	
124	1400 0135	Transistor - 2SA1015Y	
125	1604 1646	Capacitor - 470 μ F 35V	
126	1606 0998	Capacitor - 0.01 μ F 50V	
127	1604 2009	Capacitor - 100. μ F 35V	
128	VVC9 0676	Capacitor - 3.3 μ F 16V	
129	VVC9 1003	Capacitor - 0.001 μ F 50V	
130	1604 1591	Capacitor - 220 μ F \pm 20% 16V	
131	A937 9504	Capacitor - 470 μ F 16V	
132	A937 9505	Capacitor - 3.3 μ F 50V	
133	1606 0944	Capacitor - 10PF 50V	
134	1606 0807	Capacitor - 0.1 μ F 50V	
135	1606 0875	Capacitor - 1000PF 50V	
136	1401 0611	Diode - 1S1588	
137	VWA1 0469	Diode - 11DQ05	
138	1402 0547	Diode - S5566B	
139	VWA1 0475	Diode - 21DQ05	
140	1107 0515	Circuit Bracket - 3.15A	
141	VWD3 0112	Circuit Breaker	
142	VWA9 0147	Radiation Plate - Small	
143	VWA1 0209	Zenner Diode - HZ5C-1	
144	1402 0421	Zenner Diode - HZ12A-2	
145	1402 0323	Zenner Diode - HZ9A-1	
146	VWA1 0088	Zenner Diode - HZ15-2	
147	VWE1 0121	Coil - CH600C	
148	VWE2 0113	Coil - CH200C	
149	VWK2 0083	Ceramic Resonator	
150	VWT1 0122	Check Pin - LC-2-G	
151	1102 0961	Pin Housing - Mate-N-Lock - 5P	
152	1100 1093	Connector - 6P	
153	1103 1556	Connector - 10P	
154	VWS3 0420	Connector - 3P	
155	1102 1171	Connector - 5P	
156	1103 0778	Connector - 2P	
157	1103 0734	Connector - 8P	

Index No.	Part No.	Description	Q'ty Per Assembly
158	1103 0832	Connector - 7P	
159	1103 0773	Connector - 8P	
160	1103 1527	Connector - 12P	
161	1100 1095	Connector - 10P	
162	1102 1414	Connector - 8P	
163	1103 0769	Connector - 8P	
164	1103 1349	Connector - 14P	
165	VWS3 0580	Connector - 2P	
166	1204 1575	DIP Switch - 4P	
167	A937 9507	Resistor Array	
168	A937 9508	Resistor Array	
169	A937 9509	Resistor Array	
170	A937 9510	Resistor Array	
171	A937 9511	Resistor Array	
172	A937 9512	Variable Resistor	
173	1601 8186	Variable Resistor - 200KQ	
174	A937 9513	Variable Resistor	
175	A937 9514	Resistor - 4.7KQ 1/4W	
176	A936 9502	Resistor - 22KQ 1/4W	
177	A937 9515	Resistor - 560Q 1/4W	
178	A937 9516	Resistor - 3.3KQ 1/4W	
179	A937 9517	Resistor - 220Q 1/4W	
180	A937 9518	Resistor - 270Q 1W	
181	A937 9519	Resistor - 120KQ 1/4W	
182	A937 9520	Resistor - 120Q 1/4W	
183	A937 9521	Resistor - 1KQ 1/4W	
184	A937 9522	Resistor - 2.2KQ 1/4W	
185	A937 9523	Resistor - 15KQ 1/4W	
186	A937 9524	Resistor - 510Q 1/4W	
187	A937 9525	Resistor - 330Q 1/4W	
188	A937 9526	Resistor - 10Q 1/4W	
189	A936 9501	Resistor - 5.6KQ 1/4W	
190	A937 9528	Resistor - 200Q 3W	
191	A937 9529	Resistor - 6.8KQ 1/4W	
192	A937 9527	Resistor - 10KQ 1/4W	

Index No.	Part No.	Description	Q'ty Per Assembly

9. HARNESS LAYOUT FRONT VIEW

March 31, '88



9. HARNESS LAYOUT FRONT VIEW

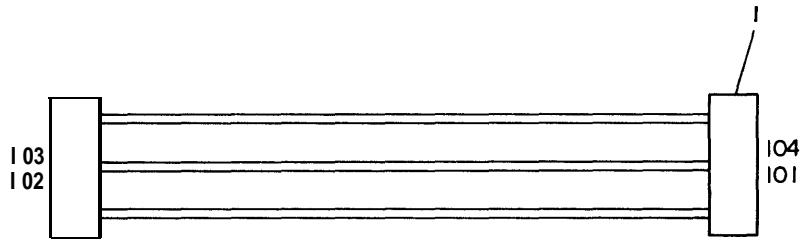
March 31, '88

Index No.	Part No.	Description	Q'ty Per Assembly
1	VFL6 0055	Exit Sensor Harness	1
2	VFM6 0043	Staple Motor Harness	1
3	VFM6 0044	Stapler Interface Harness	1
4	VFG1 5481	Stacker Tray Unit Harness	1
5	VFM6 0046	Power Relay Harness	1
6	VFL6 0049	Circuit Breaker Harness	1
7	VFL6 0050	Noise Filter Harness	1
8	VFL6 0052	Terminal Harness - 220V/240V	1

Index No.	Part No.	Description	Q'ty Per Assembly

10. EXIT SENSOR HARNESS

March 31, '88



10. EXIT SENSOR HARNESS

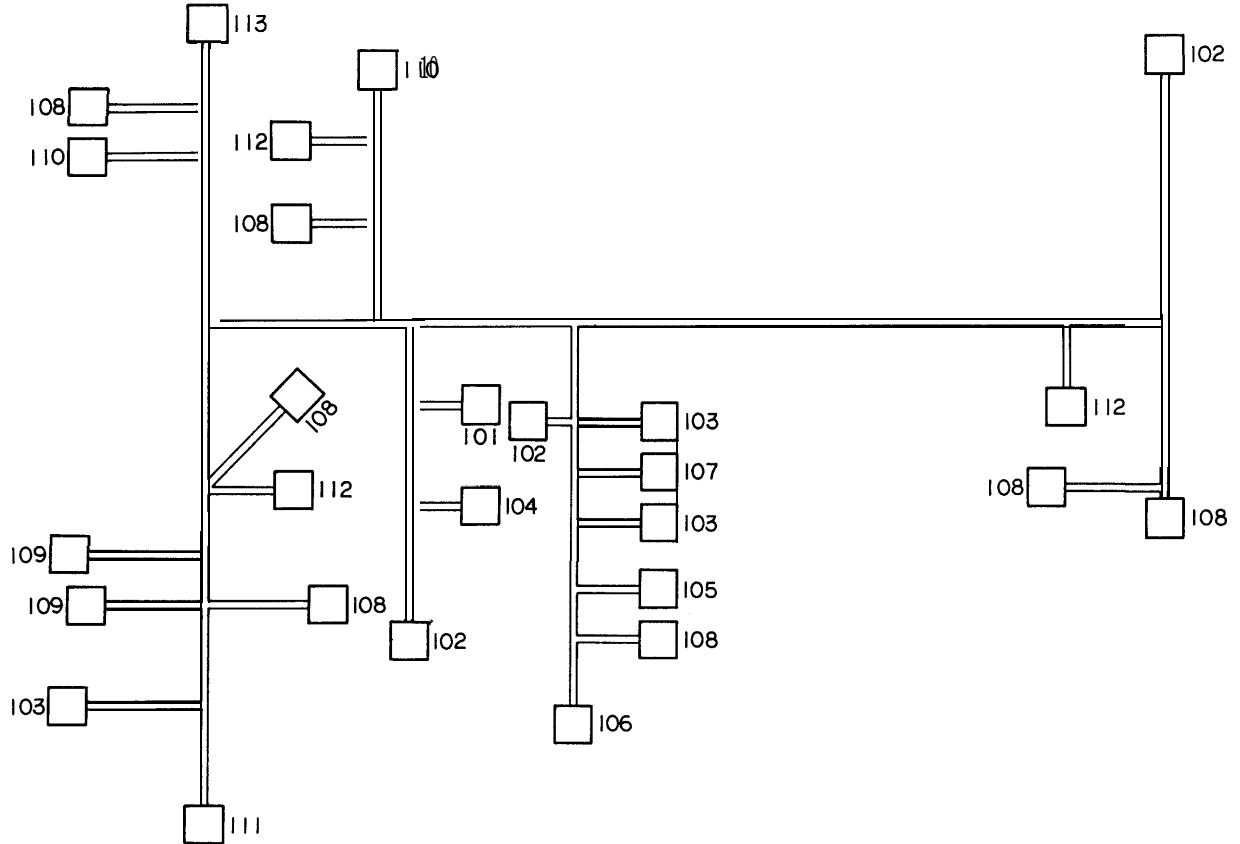
March 31, '88

Index No.	Part No.	Description	Qty Per Assembly
1	VFL6 0055	Exit Sensor Harness	1

Index No.	Part No.	Description	Qty Per Assembly
101	1100 1259	Socket - Mate-N-Lock	
102	VWS3 0885	Pin - Mate-N-Lock	
103	1102 1660	Receptacle Housing - 3P	
104	1102 1089	Connector - 3P	

11. STAPLER MOTOR HARNESS

March 31, '88



11. STAPLER MOTOR HARNESS

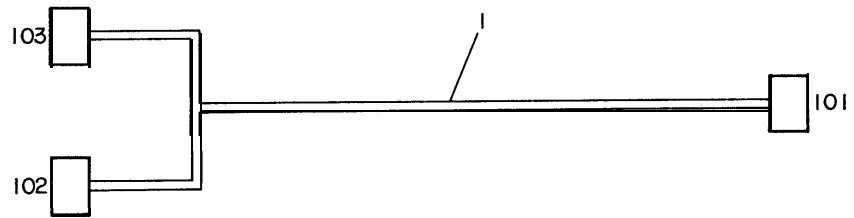
March 31, '88

Index No.	Part No.	Description	Q'ty Per Assembly
I	VFM6 0043	Staple Motor Harness	1

Index No.	Part No.	Description	Q'ty Per Assembly
101	1102 1883	Receptacle Housing - 10P	
102	A937 9531	Connector - 5P	
103	1102 1775	Receptacle Housing - 8P	
104	A936 9509	Receptacle Housing - 8P	
105	1103 1010	Receptacle Housing - 12P	
106	1103 1343	Connector - 10P	
107	1102 1091	Connector - 6P	
108	A937 9530	Connector - 3P	
109	A937 9532	Connector - 6P	
110	1102 3504	Connector - 2P	
111	VFH2 5218	Connector - 10P	
112	1102 1659	Receptacle Housing - 2P	
113	A936 9508	Receptacle Housing - 2P	

12. STAPLER INTERFACE HARNESS

March 31, '88



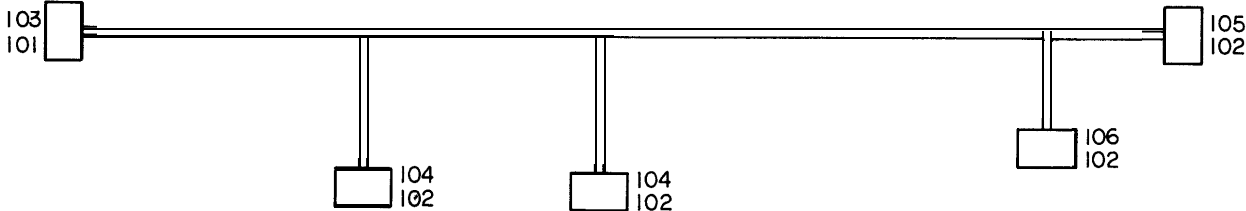
12. STAPLER INTERFACE HARNESS

Index No.	Part No.	Description	Qty Per Assembly
1	VFM6 0044	Stapler Interface Harness	1

Index No.	Part No.	Description	Qty Per Assembly
101	1102 3504	Connector - 2P	
102	1102 1911	Connector - 3P	
103	1102 1919	Connector - 11P	

13. STAPLER TRAY UNIT HARNESS

March 31, '88



13. STAPLER TRAY UNIT HARNESS

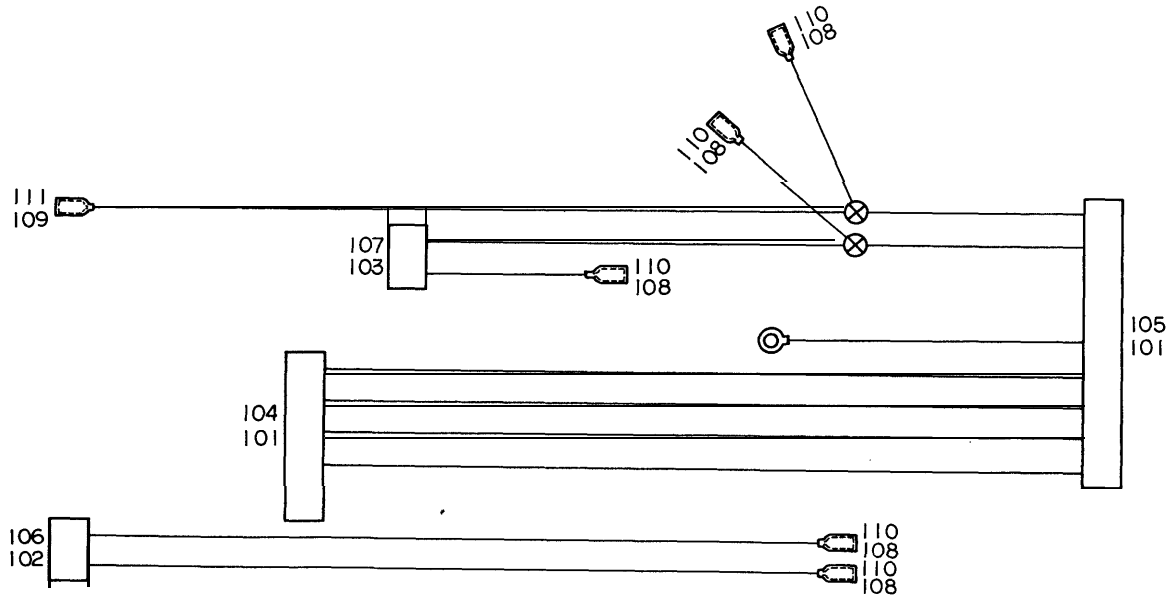
March 31, '88

Index No.	Part No.	Description	Q'ty Per Assembly
1	VFC1 5481	Stacker Tray Unit Harness	1

Index No.	Part No.	Description	Q'ty Per Assembly
101	1100 1240	Socket - Mate-N-Lock	
102	1100 1259	Socket - Mate-N-Lock	
103	1102 3504	Connector - 2P	
104	1102 1089	Connector - 3P	
105	VWS3 0431	Connector - 4P	
106	VWS3 0433	Connector - 5P	

14. POWER RELAY HARNESS

March 31, '88



14. POWER RELAY HARNESS

March 31, '88

Index No.	Part No.	Description	Qty Per Assembly
1	VFM6 0046	Power Relay Harness	1

Index No.	Part No.	Description	Qty Per Assembly
101	1100 1247	Terminal	
102	1100 1259	Socket - Mate-N-Lock	
103	1100 1042	Pin - Mate-N-Lock	
104	1102 1830	Receptacle Housing - 5P	
105	1102 1617	Receptacle Housing - 9P	
106	1102 1412	Receptacle Housing - 2P	
107	VWS4 0059	Connector (CAP) - 2P	
108	1102 0796	Connecting Sleeve 3.0mm - 220V	
109	1102 0717	Terminal Insulator	
110	11000290	Fastening Receptacle #187	
111	1100 0284	Fastening Receptacle #250	

15. CIRCUIT BREAKER HARNESS

March 31, '88



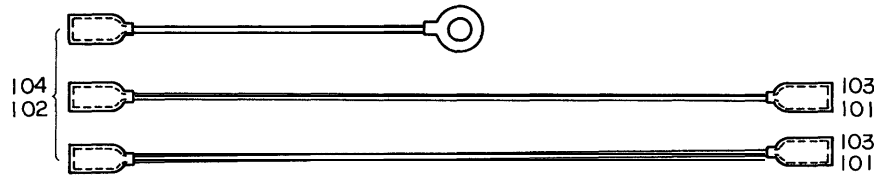
15. CIRCUIT BREAKER HARNESS

Index No.	Part No.	Description	Qty Per Assembly
1	VFL6 0049	Circuit Breaker Harness	1

Index No.	Part No.	Description	Qty Per Assembly
101	1100 0308	Fastening Receptacle	
102	VX62 9610	Nylon Sleeve	

16. NOISE FILTER HARNESS

March 31, '88



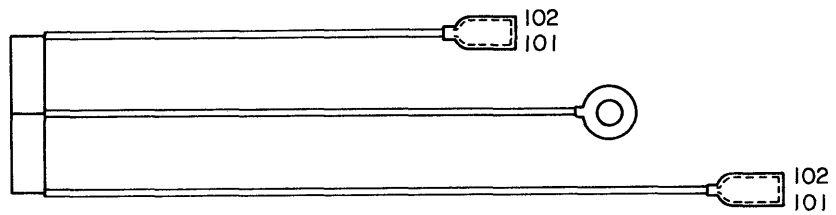
16. NOISE FILTER HARNESS

Index No.	Part No.	Description	Q'ty Per Assembly
1	VFL6 0050	Noise Filter Harness	1

Index No.	Part No.	Description	Q'ty Per Assembly
101	1102 0796	Connecting Sleeve 3.0mm - 220V	
102	VX62 9610	Nylon Sleeve	
103	1100 0290	Fastening Receptacle #187	
104	1100 0308	Fastening Receptacle #110	

17. TERMINAL HARNESS-220/240V

March 31, '88



17. TERMINAL HARNESS-220/240V

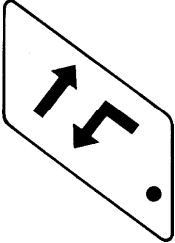
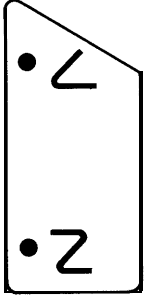




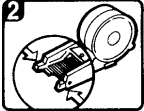

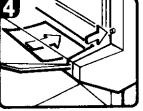
March 31, '88

Index No.	Part No.	Description	Q'ty Per Assembly
1	VFL6 0052	Terminal Harness - 220V/240V	

Index No.	Part No.	Description	Q'ty Per Assembly
101	VX62 9610	Nylon Sleeve	
102	1100 0308	Fastening Receptacle	

18. DECAL

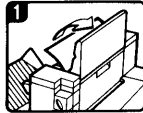
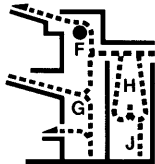
March 31, '88

<p>1</p> 	<p>2</p> 	<p>3</p> 	<p>5</p> 	<p>6</p> 
<p>4</p> <p style="text-align: center;">Replacing Staples</p> <div style="display: flex; justify-content: space-around;"> <div style="text-align: center;">  <p>1</p> <p>Open the stapler cover. Lift the green wire and remove the empty staple cartridge.</p> </div> <div style="text-align: center;">  <p>2</p> <p>Tear off the end of the staple roll of a new cartridge at the white line.</p> </div> <div style="text-align: center;">  <p>3</p> <p>Insert the new staple cartridge and lower the green wire until it locks in place. Close the stapler cover.</p> </div> <div style="text-align: center;">  <p>4</p> <p>Fully insert the paper into the stapler and press the manual staple button. Remove the paper and check if it has been stapled. If not, repeat this procedure (No.4) until the paper is correctly stapled.</p> </div> </div> <p style="margin-top: 20px;">● Refer to the Operator Instructions for further details.</p>				

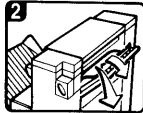
7

Removing Misfed Paper

When F is lit

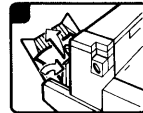
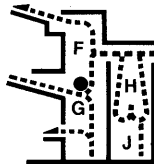


1 Open the cover **F** in the direction of the anow. Remove the misfed paper.

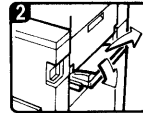


2 Open the cover **G** in the direction of the anow. Remove the misfed paper.

When G is lit

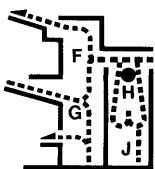


1 Lift up the cover **G** in the direction of the anow. Remove the misfed paper.

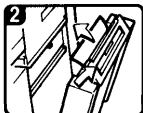


2 Lift the lever to open the guide **G**. Remove the misfed paper.

When H is lit

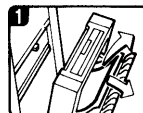
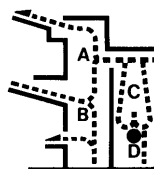


1 Open the paper fold unit **H** in the direction of the anow. Remove the misfed paper.

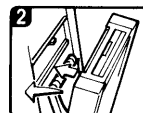


2 Lift up the cover **H** in the direction of the anow. Remove the misfed paper.

When J is lit



1 Lift up the lever to open the guide **J**. Remove the misfed paper.



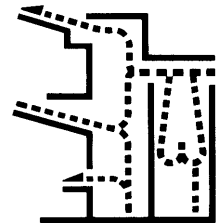
2 Open the paper fold unit **H**, then open the guide **H** in the direction of the anow. Remove the misfed paper.

●Close all covers and guides once the misfed paper has been removed.

8



9



18. DECAL

March 31, '88

Index No.	Part No.	Description	Q'ty Per Assembly
*	VFS0 8206	Decal Sheet - French	1
*	VFS0 8207	Decal Sheet - German	1
*	VFS0 8208	Decal Sheet - Spanish	1
*	VFS0 8209	Decal Sheet - Italian	1
1	VFS0 8066	Decal - Stacker Tray	1
2	VFS0 8246	Decal - Front Holder Cover	1
3	VFS0 0803	Decal - G1	1
4	VFS0 8205	Decal - Replacing Staples	1
5	VFS0 8081	Decal - F1	1
6	VFS0 8082	Decal - F2	1
7	VFS0 8204	Decal - Removing Misfeed Paper	1
8	VFS0 8084	Decal - G2	1
9	VFS0 8052	Jam Indicator Plate	1

Index No.	Part No.	Description	Q'ty Per Assembly
-----------	----------	-------------	-------------------